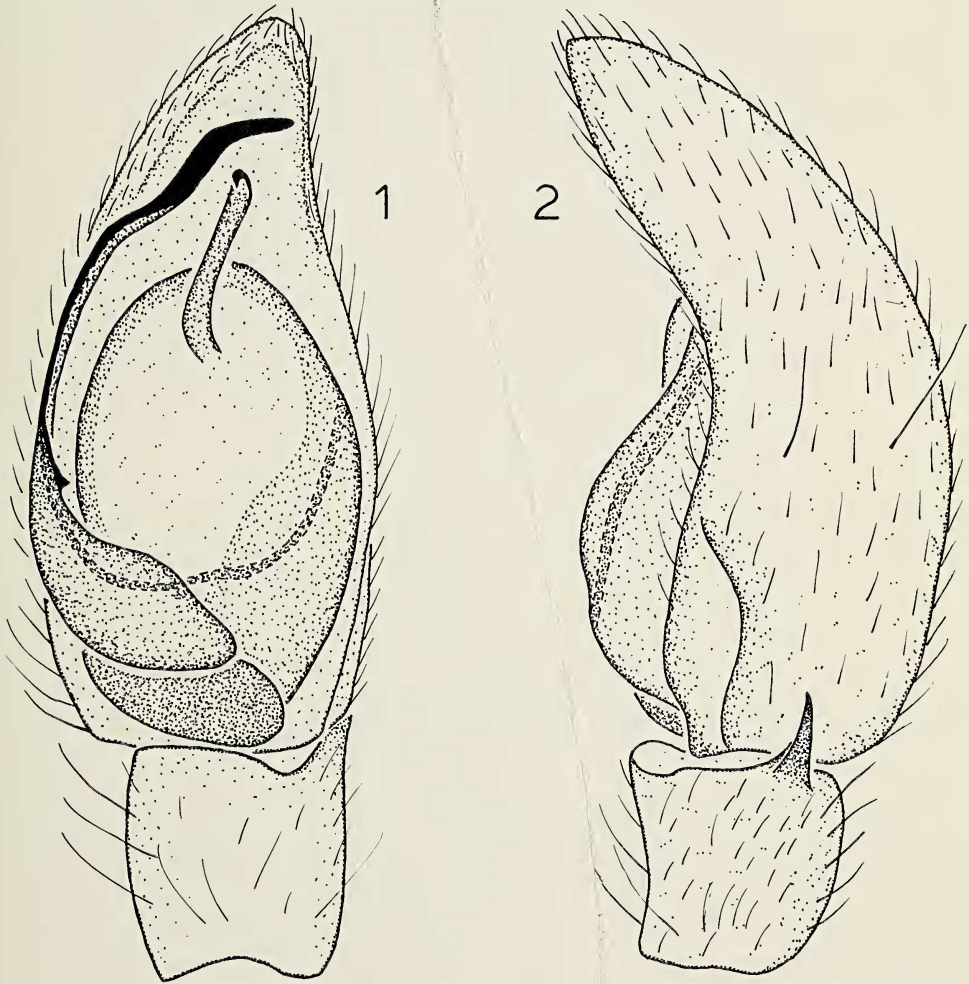


## RESEARCH NOTE

### THE MALE OF *GNAPHOSASONORA* (ARANEAE, GNAPHOSIDAE)

Through the courtesy of Dr. Willis J. Gertsch, I have recently had the opportunity to examine a collection of Gnaphosidae accumulated by him from various collectors during recent years. Included in this collection were the first known males of *Gnaphosa sonora*. These specimens, described below, will key out to *Gnaphosa salsa* in the published key (Platnick and Shadab, 1975:11), but may be easily distinguished from that species by the longer, wider, and more sinuous embolus. The format of the description and the abbreviations follow those used in Platnick and Shadab (1975).



Figs. 1, 2—*Gnaphosa sonora* Platnick and Shadab, palp: 1, ventral view; 2, retrolateral view.

*Gnaphosa sonora* Platnick and Shadab

Figs. 1, 2

*Gnaphosa sonora* Platnick and Shadab, 1975:25, Figs. 42, 71, 72, map 3.

**Diagnosis**—Males of *Gnaphosa sonora* may be distinguished from all species of the *lucifuga* group other than *clara* and *hirsutipes* by their wide embolus and single retrolateral tibial apophysis, from *clara* by the undivided tip of the embolus, and from *hirsutipes* by the presence of only one embolar tubercle (Figs. 1, 2).

Male. Total length 5.83, 6.16 mm. Carapace 2.64, 2.92 mm long, 2.14, 2.34 mm wide. Femur II 1.87, 1.98 mm long (two specimens examined). Eye sizes and interdistances (mm): AME 0.09, ALE 0.13, PME 0.11, PLE 0.11; AME-AME 0.09, AME-ALE 0.02, PME-PME 0.08, PME-PLE 0.14, ALE-PLE 0.14. MOQ length 0.30 mm, front width 0.27 mm, back width 0.29 mm. Embolus long wide, sinuous; erect embolar tubercle situated basally on retrolateral side of embolus directed retrolaterally (Fig. 1). Retrolateral tibial apophysis narrow, elongate, triangular, with tip slightly bent towards tarsus (Fig. 2). Leg spination: tibiae: I, II v0-0-1; III r1-0-1; metatarsi: I v2-0-1; II v2-0-2.

**Material Examined**—México: Sonora: east side, Sierra de Alamos (12 November 1972; V. Roth), 2 males, deposited in the American Museum of Natural History.

**Distribution**—Southern Sonora, México.

#### LITERATURE CITED

Platnick, N. I., and M. U. Shadab. 1975. A revision of the spider genus *Gnaphosa* (Araneae, Gnaphosidae) in America. *Bull. Amer. Mus. Nat. Hist.* 155(1):1-66.

Norman I. Platnick, Department of Entomology, The American Museum of Natural History, Central Park West at 79th Street, New York, New York 10024 USA.

#### NOMINCLATURAL NOTE

Opinion 1038 of the International Commission of Zoological Nomenclature ruled unanimously to validate the generic name *Argiope* Audouin, 1826 and to place it in the Official List of Generic Names in Zoology. The name *Argyope* has been placed, as an incorrect spelling, on the Official Index of Rejected and Invalid Generic Names in Zoology (*Bull. Zool. Nomencl.*, 12(2):105-109, June 1975). The case was submitted to the Office of the Secretary of the Commission in March 1967.